



## Molin Concrete Products Sponsors PCI Design Studio at UMD

**A**long with the PCI Foundation, PCI Midwest and MNPA, Molin Concrete Products is sponsoring a Precast Concrete Design Studio at the University of Minnesota Duluth focusing on Resilient Precast Design. The RPEC (Resilient Precast Engineering Curriculum) program was designed by UMD's Asst. Professor Ben Dymond to focus on precast/prestressed concrete design. John Saccoman, Molin VP of Sales & Marketing is the industry champion working with Ben and others. This PCI Design Studio is coordinated in conjunction with the UMD Department of Civil

» CONT'D. PAGE 2



### ISSUE CONTENTS:

#### UMD PCI Design Studio

**Employee News:**  
Mike Bunn

Plant Tours and Lunch & Learn Presentations

**Project Highlight:**  
80 Broadway "Northeast"  
Minneapolis, MN

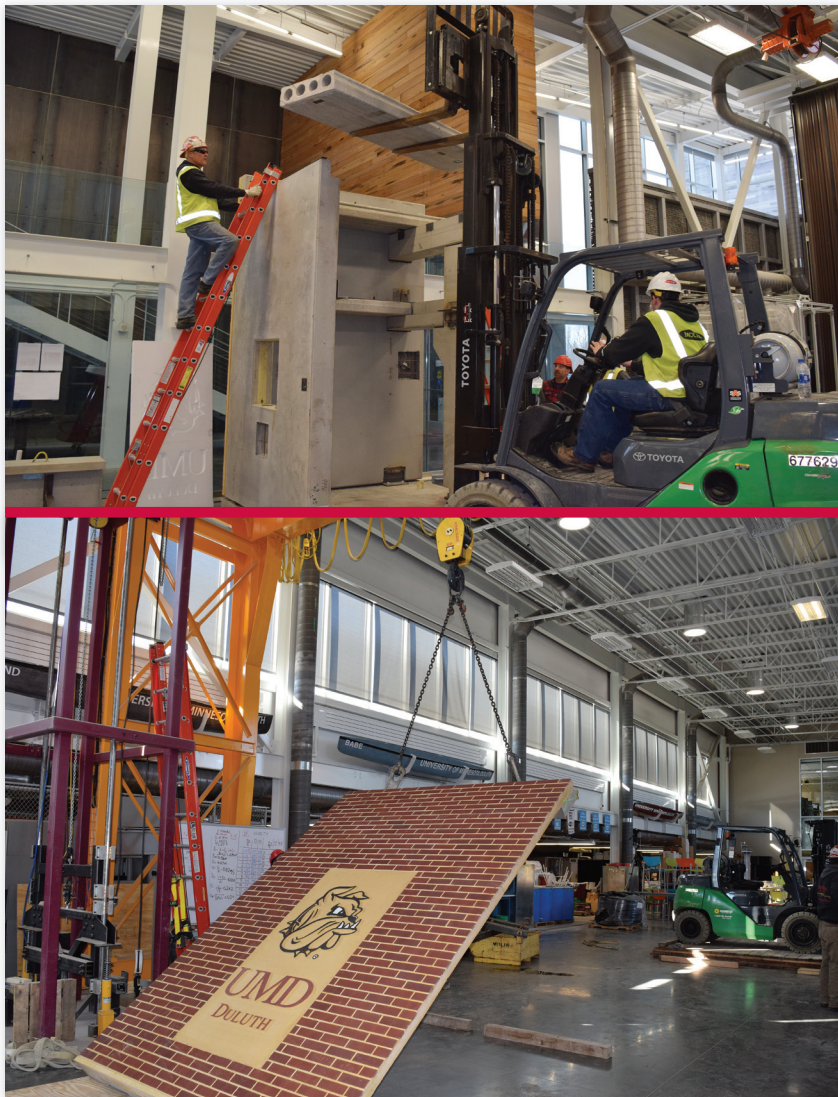
651.786.7722  
800.336.6546

**MOLIN.com**



» CONT'D. FROM COVER

Engineering, Department of Mechanical and Industrial Engineering and the Master of Business Administration programs. The Design Studio will combine the traditional approach to concrete engineering education with cutting-edge knowledge related to sustainability and business management. In lieu of the traditional engineering education which teaches basic concrete design while possibly discussing precast concrete, the UMD-PCI Design Studio will investigate advantages of designing with precast and how designing with resilient precast concrete fits into the organizational dynamic of this process. The program will challenge students to consider pushing the envelope by designing with precast concrete. «



EMPLOYEE FEATURE:

## Molin Announces Recent Staff Additions



Dan Bible  
President

**I am pleased to announce the promotion and new hire of team members at Molin Concrete Products:**

**Mike Bunn** joined Molin in January as Plant Manager of the Molin Wall Panel Plant in Ramsey, MN.

Mike's addition will be valuable to the Molin Team as we work to build on our reputation as an industry leader working toward goals for growth and continuous improvement.

### Molin Hires Mike Bunn



Mike Bunn served as a communications specialist in the Army and received a BS in Business Management from the U of MN. He worked

at Bunn Masonry, becoming the owner/CEO when he purchased the business from his father in the late 1990's. In 2011, due to the economic downturn, he closed the business and accepted employment with another precast manufacturing company in the role of Plant Supervisor and was later promoted to Plant Production Manager. Mike and his family live in Buffalo, MN.

“There is something about the large scale world of the precast concrete



PROJECT HIGHLIGHT:

# 80 Broadway "Northeast" Project | MINNEAPOLIS, MN

**ARCHITECT:** Momentum Design Group  
**STRUCTURAL ENGINEER:** Erickson Roed Associates  
**GENERAL CONTRACTOR:** Weis Builders

**M**olin produced the precast and prestressed concrete products for the 80 Broadway housing project located in the St. Anthony West neighborhood at the intersection of Broadway St NE and Marshall St. NE in Minneapolis. The structure is a new 6-story 98-unit residential building with 49 enclosed parking stalls.

Molin's early involvement in the schematic and design development stages of this project provided efficient layout recommendations for the beam and columns as well as structural connections. Molin provided design development and budgetary assistance at multiple stages of this project.

According to Craig Hartman with Momentum Design Group, "We first identified precast concrete wall panels at the base of the building as a method to increase speed of construction on site. Molin was available every step of the way and introduced new ideas to the



Momentum Design Group

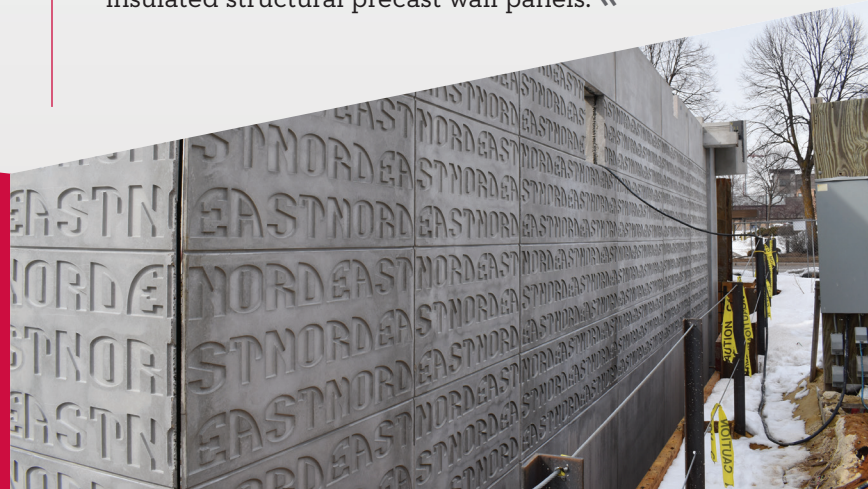
team and was eager to push the boundaries of how a precast wall panel is defined. We wanted a powerful statement at one of the busier intersections in the city. With Molin's design assistance, we achieved this by incorporating a 24' cantilevered precast overhang." Mr. Hartman continued, "When the owner suggested the word "NORDEAST" in a repetitive pattern across the precast wall panels, Molin took the idea and guided the process from the initial sketch. It was exciting to see the mock-up panel for the first time at the production facility; that point when the sketch became reality for the first time. The boundaries of precast construction were pushed both aesthetically and structurally. There is something so unique about the large scale words being punched into the precast concrete wall panels. This element of the building elevations is the exact opposite to so many disposable banners, vinyl letters, and digital signs we see today which incessantly change at a moment's notice. The feeling of strength, endurance, and permanency is overwhelming and stops people in their tracks to take it all in."

Molin's scope of work included designing, producing, delivery and installation of; 900 lineal feet of precast columns, 1,216 lineal feet of prestressed beams, 27,132 square feet of 8", 12" and 16" Hollow Core and solid slabs, and 14,640 square feet of insulated and non-insulated structural precast wall panels. «



g so unique about  
s being punched into  
wall panels."

– Craig Hartman,  
Momentum Design Group



# MOLIN

## MOLIN CONCRETE PRODUCTS

415 Lilac Street  
Lino Lakes, MN 55014

651.786.7722  
800.336.6546

**MOLIN.com**



Learn more about Molin:  
» Email [sales@molin.com](mailto:sales@molin.com)



Visit us on social media

## Molin Representatives Offer Plant Tours and Lunch & Learn Presentations



**Molin Business Development & Marketing Representatives** offer multiple education opportunities to architects, engineers and contractors. Lunch & Learn presentations may be provided in the client offices or combined with a PCI plant tour. Many presentations and tours are registered with AIA/CES and Registered Continuing Education Program (RCEP) of the National Council of Examiners for Engineers & Surveyors (NCEES) for continuing professional education credits. If you or your staff would be interested in learning more about the presentations offered by Molin, please visit our website **MOLIN.com** or fax the "Fax Back Information Form" below to Molin at **651.786.0229** with requests for additional information and/or Lunch & Learn presentation requests. «

## Sign up for presentations online by visiting our website or use this fax back form.

If you're looking for product information, want to schedule a plant tour or box lunch presentation, need an address/company change, need to add or delete someone as a newsletter recipient, change your email address, or wish to be contacted by a Molin rep, please fill out this information form and fax it back to us or sign up online by visiting our website. Thanks.

### Fax Back Information Form » Fax this form to 651.786.0229

#### Please send me information on:

- ☐ Hollow Core Plank
- ☐ Foundation Wall Panels
- ☐ Structural Wall Panels
- ☐ Prestressed Beams
- ☐ Precast Columns
- ☐ Architectural Wall Panels

#### Please have a representative call me:

- ☐ I have immediate needs.
- ☐ Please call in \_\_\_\_\_ months.
- ☐ I am interested in a lunch box seminar.
- ☐ I am interested in a plant tour.

#### If you know of someone who should be added as a newsletter recipient, or taken off the list, please let us know.

Name \_\_\_\_\_  
Company \_\_\_\_\_  
Address \_\_\_\_\_  
City \_\_\_\_\_ State \_\_\_\_\_ Zip \_\_\_\_\_  
Comment \_\_\_\_\_