

2018 » Q2 ISSUE
Molin Concrete Products

MOLINIUM

Molin Architectural Precast Color and Texture Guide

We are excited to bring you our newly designed Architectural Precast Concrete Color and Texture Guide (APC Guide).

The choice of appropriate aggregate colors and precast textures, in conjunction with color matrix, is critical when designing with architectural precast. Molin's Color and Texture Guide will assist designers and architects when selecting color and texture for architectural precast solutions. When considering light, shadow, density and surrounding buildings, the Molin Architectural Precast Color and Texture Guide

» CONT'D. PAGE 2



ISSUE CONTENTS:

**Molin Architectural Precast
Color and Texture Guide**

Employee News:
Joe Podkopacz

Project Highlight:
Irvine-Exchange, St. Paul, MN

Molin Family Fun Day 2018

Molin Gear Now Available

**Plant Tours and Lunch & Learn
Presentations**

651.786.7722

800.336.6546

MOLIN.com



will be used for initial selection from Molin's standard palette to help designers and architects to define their desired aesthetic solution. The combination of Molin's standard color and texture samples, along with photos showing various standard color, aggregate mixes, and multiple finishes aims to simplify the aggregate and color selection process.

Contact Molin Concrete Products for a review of our new APC Guide or to set up a tour of Molin's state-of-the-art Wall Panel facility. «



EMPLOYEE FEATURE:

Molin Concrete Products Announces Recent Promotion



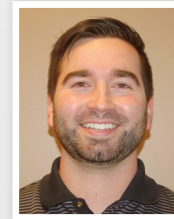
Dan Bible
President

I am pleased to announce a recent promotion at Molin Concrete Products:

Joe Podkopacz has been promoted to the position of Field Coordinator.

Joe brings a wealth of industry experience to the Molin Team as we continue building on our reputation as an industry leader while working toward goals for growth and continuous improvement.

Molin Promotes Podkopacz



Molin Concrete Products has promoted Joe Podkopacz to the position of Field Coordinator. Joe has been employed at Molin Concrete

Products since July 2014. For the last 2 1/2 years, Joe held the position of Assistant Field Coordinator at Molin. Joe lives in Coon Rapids, MN with his brother along with their 2 dogs, Nikko and Blu. In his free time Joe enjoys playing softball, hockey and golf along with relaxing at his cabin in Otter Tail County.

This project is
keystone in re
historic downt

PROJECT HIGHLIGHT:

Irvine-Exchange | ST. PAUL, MN

ARCHITECT: Urbanworks Architecture LLC, Minneapolis, MN
STRUCTURAL ENGINEER: BKBM Engineers
GENERAL CONTRACTOR: Benson Orth General Contractors

Molin produced 69-precast columns, 134-prestressed beams, 86,050 square feet of Hollow Core and solid slabs, and 46,000 square feet of insulated and non-insulated wall panels, shear walls and spandrel panels for this 6-story apartment building which includes 175-housing units and 192-below ground parking stalls. This project is a keystone in revitalizing St. Paul's historic downtown. Built across Kellogg Ave. from the popular Xcel Energy Center, the project features a club room, outdoor pool, fitness center, a dog run, a two story lobby and an amenity deck facing the Mississippi River and Harriet Island. The design-build project allowed for collaboration between Molin and the design team which began during the conceptual design stage. «



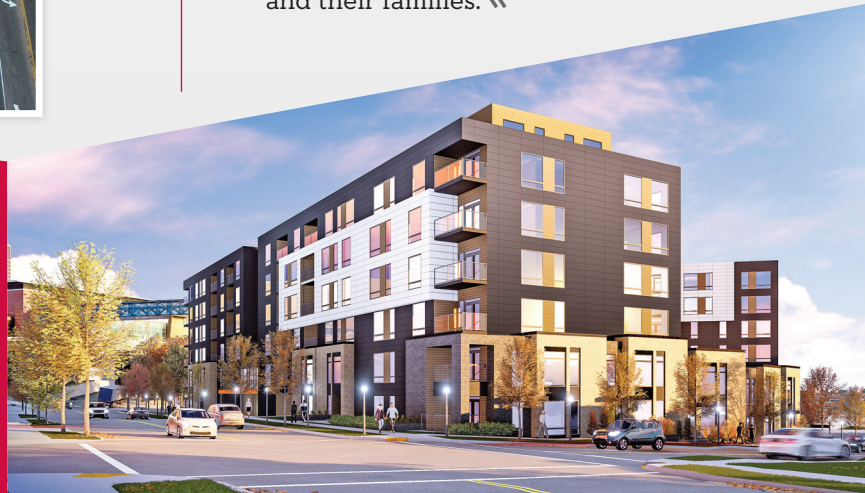
Molin Family Fun Day 2018



Molin Concrete Products Company recently hosted their annual Molin Family Fun Day on June 23rd at Valleyfair in Shakopee, MN. The weather was fantastic as families of Molin employees enjoyed a bar-b-que at Picnic Point as part of a fun day of thrilling rides, various shows and relaxing while cooling off at Valleyfair's Soak City Waterpark. Molin hosts their Family Fun Days each summer as an opportunity to give employees and their families the opportunity to enjoy the casual setting and meet other employees and their families. «

a
vitalizing St. Paul's
town.

Irvine-Exchange | ST. PAUL, MN



MOLIN

MOLIN CONCRETE PRODUCTS

415 Lilac Street
Lino Lakes, MN 55014

651.786.7722
800.336.6546

MOLIN.com



Learn more about Molin:
» Email sales@molin.com



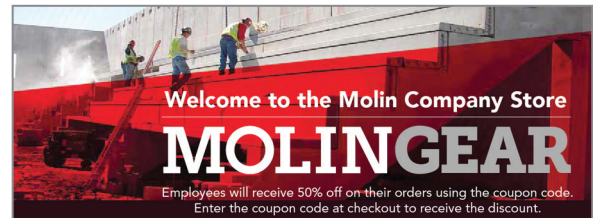
Visit us on social media

Molin Offers Plant Tours and Lunch & Learn Presentations



Molin Business Development & Marketing Representatives offer multiple education opportunities to architects, engineers and contractors. Lunch & Learn presentations may be provided in the client offices or combined with a PCI plant tour. Many presentations and tours are registered with AIA/CES and Registered Continuing Education Program (RCEP) of the National Council of Examiners for Engineers & Surveyors (NCEES) for continuing professional education credits. To learn more about the tours and presentations offered by Molin, please visit our website at **MOLIN.com** and fill out and submit the **Contact Us** form. Or call Molin at **651.786.0229**. «

Molin Gear Now Available



Molin now offers **Molin Gear** which can be purchased by visiting our website at **MOLIN.com**. The offer includes items of stylish clothing and practical hard goods such as coffee mugs, water bottles, cell phone chargers, umbrellas and many other items with Molin branding. While the cost of the items is extremely competitive due to the quantities purchased, Molin offers a 50% discount and pays for shipping when items are purchased by Molin employees. Visit the **Molin Gear** area of our website and don't hesitate to contact your Molin representative if you have ideas for additional items you'd like to see made available. «

MOLIN.com

Sign up for presentations online

If you're looking for product information, want to schedule a plant tour or box lunch presentation, need an address/company change, need to add or delete someone as a newsletter recipient, change your email address, or wish to be contacted by a Molin rep, please visit our website at **MOLIN.com** and fill out and submit the **Contact Us** form. Thanks.