



MOLIN

2019 » Q3 ISSUE
Molin Concrete Products

MOLINIUM

Lowa46 » “The Capp” Project MINNEAPOLIS, MN



In October of 2017, Molin Concrete Products was invited to join Oppidan, Anderson Companies, Pope Architects, and BKBM Engineers as part of the development team for their project, The Capp which is a precast concrete multi-family housing/mixed use project. The Capp is located in Minneapolis next to the Blue Line light rail station in the Longfellow and Hiawatha neighborhoods. The structure includes a 5-story 148-unit residential building with 3,000 square feet of small shop retail, a 46,127 square foot Cub Foods grocery store, heated underground parking, and a large public plaza.

» CONT'D. PAGE 3

ISSUE CONTENTS:

Project:
Lowa46 / “The Capp” Project,
Minneapolis, MN

**Molin Employee
Committee Charter**

**Molin Wall Panel Plant
Safety Committee**

Employee News:
» Promotions, Transfers, and New Hires

Molin Gear

**Plant Tours and Learn at Lunch
Presentations**

651.786.7722
800.336.6546

MOLIN.com

» CONT'D. FROM COVER

Molin's full-service design build team provided value engineering, and budgetary assistance at multiple stages of the project. Early involvement in the schematic and design development stages provided efficient layout recommendations for the precast components and related structural connections.

Molin's scope of work included designing, producing, and installation of: 2,457 lineal feet (81 pcs) of precast columns, 3,743 lineal feet (158 pcs) of prestressed beams, 99,685 square feet of 8", 12" and 16" Hollow Core and solid slabs, and 55,200 square feet of insulated and non-insulated architectural precast wall panels with cast-in thin brick veneer. «



EMPLOYEE FEATURE:

Molin Employee Committee Charter

Molin Concrete Products Company has long been recognized as a highly attractive destination for employment. To help enhance that employment experience Molin recently formed the Employee Committee which serves a mission to promote employee engagement in the company and the communities we work in through charitable donations and social events. The committee has voted to appoint Patricia Lange and Jason Becker to serve as Co-Chairs and the Management Liaison is Susan Renee. Represented by employees from every department, the primary purpose of the committee will be to fulfill annual charitable donations voted on by the committee to provide enjoyable and safe events that Molin employees can indulge in. The committee focus will be to continue Molin's culture based from founding principles of; Respect, Safety, Flexibility, Teamwork, Customer Focus and Doing the Right Thing through community engagement, employee engagement and company engagement.

The first employee event was the 2019 Fall Company Social luncheon hosted by the committee on September 23rd (*Lino Lakes*) and September 24th (*Ramsey*). Molin employees donated misc. school supplies which were presented to Golden Lake Elementary in Lino Lakes and Ramsey Elementary in Ramsey. This photo taken at the Lino Lakes event shows committee members and guests (*left to right*) - Taylor Goetsch, Dave Dunleavy, Luke Molin, Brian Dietz (*Superintendent-Centennial School District 12*), Chris Gerst (*Principal-Golden Lakes Elementary*), Diane Anderson, Patricia Lange, Jason Becker, Sandy Lux and Matt Soanes. Not shown but present: Susan Renee and Kristin Bergert (*Director of Public Info. and Outreach-Centennial School District*). «

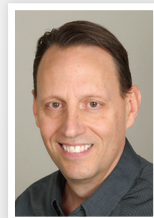


Molin Wall Panel Plant Safety Committee

As part of Molin's overall safety program, the organization has established safety committees at both the Structural Plant located in Lino Lakes and the Wall Panel Plant located in Ramsey, MN. The mission statement of the safety committee at the Wall Panel Plant is "To create and maintain a successful safety program with management support, communication, training and total employee involvement." Our goal is to achieve an incident-free work environment. The Chairperson for the Ramsey Plant Safety Committee is Eric Larson. As Molin's first out-going committee member at the Wall Panel Plant, employee Tito Hansen recently received recognition for his service and commitment while serving on the committee. «



MOLIN



Dan Bible
President

Molin Announces New Hires

I am pleased to announce the promotions, transfers and hiring of team members at Molin Concrete Products:

Andrew Stumne joined Molin in June 2019 in the position of Project Manager.

Jeremy Crowe was promoted in July 2019 to the position of Project Manager.

Jeremy Goodin was promoted in July 2019 to the position of Project Superintendent.

Traci Busch joined Molin in July 2019 in the position of Shipping/Receiving Clerk.

Morgan Kelly joined Molin in August 2019 in the position of Drafter.

Justin Bowen was hired in September 2019 to return to Molin in the position of Assistant Field Coordinator.

Matt Soanes was promoted in September 2019 to the position of Business Development Representative.

Cher Lee was promoted in September 2019 to the position of QC Technician.

Sandy Lux was promoted in September 2019 to the position of Continuous Improvement Technician.

Kassie Florentine was promoted in September 2019 to the position of Lead Sales Coordinator.



Molin Hires Andrew Stumne

Andrew was hired as a Project Manager - Commercial. Andrew has a degree in Construction Management and has been in the precast industry since 2001. During his professional career he has held positions in Sales/Estimating, Project Management, and Production

Management. During Andrew's time in the precast industry he has taken part in notable projects such as US Bank Stadium (Production Manager), Target Field and TCF Bank Stadium (Estimating/Project Management). Andrew and his wife along with two teenage children and enjoy time out on the lake, four-wheeling, snowboarding and golfing.



Molin Promotes Jeremy Crowe

Jeremy Crowe has been promoted to Project Manager. Jeremy graduated high school in 2007. He enlisted, and left for Marine Corps boot camp the day after graduation. During the 4-years Jeremy spent in the military, he was deployed 3-times including to the

west Pacific/Indian Ocean (U.A.E. Qatar, Kuwait, Hong Kong, Thailand, Guam, Hawaii, Jordan, Iraq), Japan/South Korea, and finally in the spring of 2010 a combat deployment in Afghanistan to Helmand province, city of Marjah (South West Corner of the city of Marjah) conducting counter insurgency operations. He Served with 2nd battalion 5th Marine Regiment, Fox Company, based out of San Mateo, Camp Pendleton California. Jeremy met his wife (Hannah) during his enlistment and they married September 2011. In 2011 he moved back to Minnesota and worked in sales until starting college at North Hennepin Community College, with a Business Management focus. Jeremy began his employment at Molin Concrete Products in the field installation department in 2015. He and his wife have 3-boys. Jeremy's hobbies include hunting and fishing in the Grand Rapids Minnesota area, and Precision Rifle Competitions around the Northern Minnesota/Wisconsin/North Dakota area.



Molin Promotes Jeremy Goodin

Jeremy Goodin has been promoted to the position of Project Superintendent. Jeremy graduated from Buffalo, MN High School in 1990 and has been employed at Molin since 1991. His experience at Molin includes

5-years as a Laborer in Field Operations and 23-years as a Field Foreman. Jeremy and his wife live in St. Michael, MN and they have 3-boys. His hobbies include riding motorcycle with his wife.



Molin Hires Traci Busch

Traci was hired to join Molin as a Shipping & Receiving Clerk. Prior to joining Molin Traci was employed at Coonan Inc. where she was involved with shipping & receiving, inventory and inspection. Prior employment also includes Medtronic where she held a similar role.

Traci is single and her hobbies include gardening, sewing, reading and spending time with family and friends.

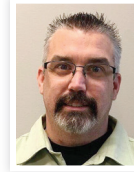


Molin Hires Morgan Kelly

Morgan was hired to join the Molin Drafting staff. He has been employed in the precast/structural concrete industry since 1989. Morgan graduated with an Associate Degree in 1995 from ITT Tech. While working in the precast industry for another producer,

Morgan has recently been using Revit and Edge drafting programs exclusively and has had the opportunity to work on some exciting projects including a \$270 million distribution/storage facility in South Carolina as well as the Pentagon Memorial in Arlington, VA and the Flight 93 memorial walkway and overlook in Shanksville, PA. Morgan served in the US Army from 1993-2000 and ended his Army career as an E5 Sgt. While serving in the Army, Morgan was assigned to many joint operations between the Japanese Ground Self Defense Forces and the US Army Specialized Divisions, such as the 10th Mountain Division

and 25th Infantry Division as interpreter support in varying locations in Japan. Morgan brings valuable experience and will be a key asset to the Drafting & Engineering team. His office will be located in Molin's Headquarters facility located in Lino Lakes, MN. Morgan and his wife have 2-daughters and 2-grandsons. He enjoys hiking and camping as well as visiting waterfalls and other natural scenic destinations. Morgan also has been participating in disc golf for nearly 14-years.



Molin Hires Justin Bowen

Justin was hired as Assistant Field Coordinator. Justin worked for Molin in prior years and has extensive knowledge in Precast operations related to the field. With many years of experience working for Molin in the field, Justin has acquired a vast understanding of

construction and especially the precast industry. Justin has 3 children and much of his spare time is spent their after-school activities. He enjoys being outside with sports, bonfires, and camping. Justin grew up in Saint Paul, MN and has always followed Minnesota sports teams. When he's not busy with family activities Justin enjoys riding motorcycle.



Molin Promotes Matt Soanes

Matt has been promoted to Business Development Representative after being hired by Molin in 2015 as an Estimator. Matt brings a background in architectural products which is essential to Molin's strategic plan.

Matt came to Molin with experience from Walker

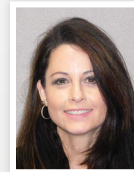
Parking Consultants, Opus prior to employment with two precast manufacturing firms. Matt has leveraged his 20 plus years in the precast industry making an immediate impact on our sales/estimating department as well as with our key customers. Matt has a true passion for the precast industry and is dedicated to expanding his experience and knowledge in this new role. Matt will continue being an integral part to ensure Molin continues our long history of solid relationships and excellent service. Matt will work from his office located in Molin's Headquarters facility located in Lino Lakes, MN.



Molin Promotes Cher Lee

Cher has been promoted to QC Technician. Cher attended St. Paul college and has been working at Molin for almost 4 years. Outside of work he enjoys time with family. Cher has 4 children, 1 son and 3 daughters. Away from work Cher enjoys hobbies

including aquascaping, pigeon racing and sports.

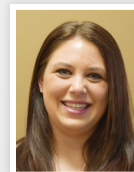


Molin Promotes Sandy Lux

Sandy has been promoted to Continuous Improvement Technician. She has nearly 20 years of professional office experience and has worked in the manufacturing industry for nearly 14 years in various roles in

operations, administration, purchasing and engineering.

Her training stems from Quality and Engineering mentors, classes and seminars, and other off site training. She enjoys problem solving, organizing, creative projects and collaborating with others. Sandy spends her free time with family, church, friends and her pets.



Molin Promotes Kassie Florentine

Kassie has been promoted to Lead Sales Coordinator. Kassie graduated from Anoka Tech in Spring of 2015 as an Administrative Assistant. She started her employment with Molin in the Summer of 2015, as

Receptionist and also provided assistance to Molin's

Accounting department. Shortly after starting her career at Molin, Kassie also bought a house, got married, and grew her family by adopting a couple puppies. In 2016, Kassie joined the Molin Sales team as Assistant Sales Coordinator. During her time at Molin, Kassie has implemented a new CRM software which has been a strategic enhancement for the Molin Sales team. She enjoys spending time outdoors with her husband, son and other family and friends. Kassie enjoys paddleboarding, four-wheeling, snow boarding, kayaking, and camping.

MOLIN

MOLIN CONCRETE PRODUCTS

415 Lilac Street
Lino Lakes, MN 55014

651.786.7722
800.336.6546

MOLIN.com



Learn more about Molin:
» Email sales@molin.com



Visit us on social media

Molin Offers Plant Tours and Learn at Lunch Presentations

Molin Business Development & Marketing Representatives offer multiple education opportunities to architects, engineers and contractors. Learn at Lunch presentations may be provided in the client offices or combined with a PCI plant tour. **Molin offers presentations designed and registered by PCI with AIA/CES and Registered Continuing Education Program (RCEP) of the National Council of Examiners for Engineers & Surveyors (NCEES) for 1 accredited CEU. Molin also offers 2.0 accredited CEU's for touring either of the production plants which includes a short presentation.** Molin will provide transportation from your office to our plants within a reasonable proximity of the plants and when the tour group size is 10 or more individuals. To learn more about the tours and presentations offered by Molin, please visit our website at **MOLIN.com** and fill out and submit the **Contact Us** form. Or call Molin at **651.786.7722**. «

MOLINGEAR

Fall and cooler weather is right around the corner so be sure to visit Molin's website and click on the **Molin Gear** tab to see all the logo apparel.

The Molin Store allows you to purchase high quality items with Molin's logo including; chore coats, hi-vis safety sweatshirts & jackets, heavy-weight "hockey hoodies" in 3-colors, casual light, medium and heavy weight jackets as well as other cool weather options include sweaters, long sleeve casual and dress shirts. «



Remember to use your employee code upon checkout to receive a 50% discount from listed prices when ordering from the online Molin Gear store.



MOLIN.com

Sign up for presentations online

If you're looking for product information, want to schedule a plant tour or box lunch presentation, need an address/company change, need to add or delete someone as a newsletter recipient, change your email address, or wish to be contacted by a Molin rep, please visit our website at **MOLIN.com** and fill out and submit the **Contact Us** form. Thanks.