

Safe Load Table

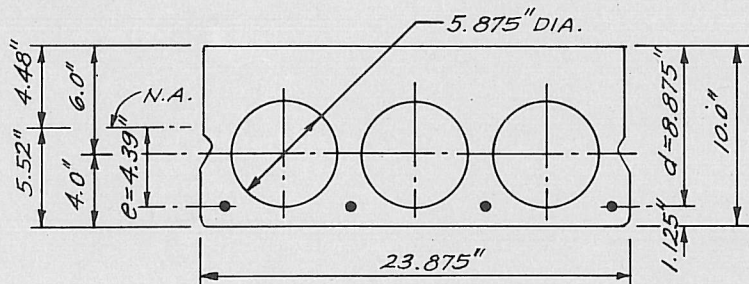
hi-stress flexicore®

10" x 24" SECTION

UNIFORMLY DISTRIBUTED SUPERIMPOSED* LOAD IN LBS. PER SQ. FT.

Standard Designation	Combination of 7-Wire Strand	Strand Area Sq. In.	M _u in Ft.-Kips per Unit	SIMPLE SPAN IN FEET—CENTER TO CENTER OF END BEARINGS																																															
				14	15	16	17	18	19	20	21	22	23	24	25	26	27	28	29	30	31	32	33	34	35	36	37	38	39	40	41	42	43																		
1024R-A58	4-1/2	0.575	82.74															313	296	270	243	220	199	180	163	148	135	122	111	100	91	82	74	65	58	51	45	39	33												
1024R-A51	2-1/2 & 2-7/16	0.505	73.74							342	322	290	260	233	210	189	170	153	138	125	113	101	91	82	74	66	58	51	44	38	32	27	22																		
1024R-A44	4-7/16	0.436	64.38					386	352	311	275	245	218	195	174	156	140	125	112	100	90	80	71	63	56	49	43	36	30	24																					
1024R-A38	2-7/16 & 2-3/8	0.378	56.84					345	302	266	235	208	185	164	146	130	115	103	91	81	71	63	55	48	41	35	30	25																							
1024R-A32	4-3/8	0.320	49.07			383	331	288	252	221	194	171	150	132	117	103	90	79	69	60	52	45	38	32	26	21																									
1024R-A29	2-1/2	0.288	44.53			341	294	255	222	194	170	148	130	114	100	87	76	66	57	48	41	34	28	23	17																										
1024R-A28	2-3/8 & 2-5/16	0.275	42.80			325	280	240	211	184	160	140	122	107	93	81	70	60	52	44	37	30	24	19	14																										
1024R-A28	4-5/16	0.291	36.38	369	312	266	228	196	169	146	126	109	94	81	69	59	49	41	34	27	21	16	11																												
1024R-A22	2-7/16	0.218	34.01	340	288	245	209	179	154	132	113	97	83	71	60	50	42	34	27	21	15	10																													

PHYSICAL PROPERTIES OF STRUCTURAL SECTION AND SPECIFICATIONS



DEAD LOAD, $W_D = 82$ P.S.F. GROUTED WEIGHT OF STRUCTURAL UNIT.

LOADS ABOVE HEAVY STEPPED LINE GOVERNED BY SHEAR.

TABULATED LOADS ARE BASED ON AC1318-71 WHERE $M_u = 1.4 M_D + 1.7 M_L$ AND WITH ALL LOADS SUPERIMPOSED ON THE STRUCTURAL SECTION CONSIDERED AS LIVE LOAD.

O. NEIL OLSON & ASSOCIATES
WAUWATOSA, WISCONSIN

MOLIN CONCRETE PRODUCTS CO.
415 LILAC ST. LINO LAKES,
MINN. 55014 PHONE (612) 786-7722