

hi-stress flexicore®

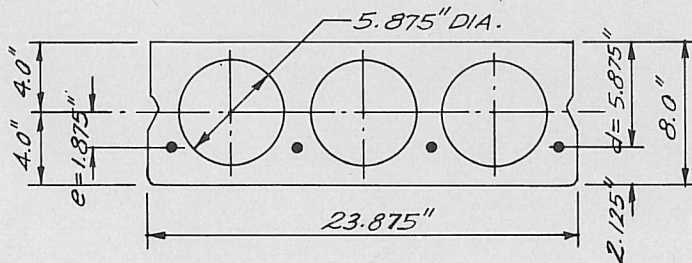
Safe Load Table

8" x 24" SECTION

UNIFORMLY DISTRIBUTED SUPERIMPOSED* LOAD IN LBS. PER SQ. FT.

Standard Designation	Combination of 7-Wire Strand	Strand Area Sq. In.	M _u in Ft.-Kips per Unit	SIMPLE SPAN IN FEET—CENTER TO CENTER OF END BEARINGS																																								
				12	13	14	15	16	17	18	19	20	21	22	23	24	25	26	27	28	29	30	31	32	33	34	35	36	37	38	39	40	41											
824U-A58	4-1/2	0.575	50.82								276	259	244	222	200	179	160	144	129	117	105	95	85	77	69	62	56	50	44	39	34	29	25	21										
824U-A51	2-1/2 & 2-7/16	0.505	45.72					307	286	267	250	221	196	175	156	139	125	112	100	90	80	72	64	58	51	46	40	34	30	25	21													
824U-A44	4-7/16	0.436	40.29					305	281	245	215	190	168	148	132	117	104	93	83	73	65	58	51	45	40	35	29	25	20															
824U-A38	2-7/16 & 2-3/8	0.378	35.83			346	319	282	244	213	186	163	144	127	112	99	87	77	68	60	53	46	40	35	30	25	21																	
824U-A32	4-3/8	0.320	31.16			327	278	239	206	179	156	136	119	104	91	80	70	61	53	46	40	34	29	24	20																			
824U-A29	2-1/2	0.288	28.39	385	348	293	249	213	184	159	138	120	104	91	79	69	59	51	44	38	32	27	22	18																				
824U-A28	2-3/8 & 2-5/16	0.276	27.33	399	333	281	238	204	175	151	131	113	98	85	74	64	55	48	41	35	29	24	19																					
824U-A23	4-5/16	0.231	23.37	334	278	233	197	167	143	122	105	90	77	66	56	48	41	34	28	23	18	14																						
824U-A22	2-7/16	0.218	21.89	310	257	215	181	154	131	112	95	81	69	59	50	42	35	29	23	18	14																							

PHYSICAL PROPERTIES OF STRUCTURAL SECTION AND SPECIFICATIONS



DEAD LOAD, W_D = 57 P.S.F. GROUTED WEIGHT OF STRUCTURAL UNIT.
 LOADS ABOVE HEAVY STEPPED LINE GOVERNED BY SHEAR.
 TABULATED LOADS ARE BASED ON AC1318-71 WHERE M_u = 1.4 M_D + 1.7M_L AND WITH ALL LOADS SUPERIMPOSED ON THE STRUCTURAL SECTION CONSIDERED AS LIVE LOAD.

O. NEIL OLSON & ASSOCIATES
 WAUWATOSA, WISCONSIN

MOLIN CONCRETE PRODUCTS CO.
 415 LILAC ST. LINO LAKES,
 MINN. 55014 PHONE (612) 786-7722