

hi-stress flexicore®

Safe Load Table

8" x 24" SECTION

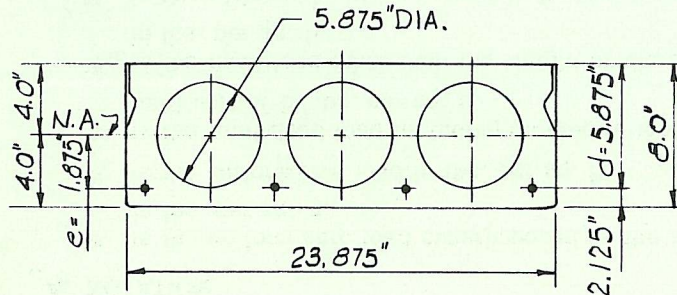
See instructions on back side of sheet for using this table.

UNIFORMLY DISTRIBUTED SUPERIMPOSED* LOAD IN LBS. PER SQ. FT.

Standard Designation	Combination of 7-Wire Strand	Strand Area Sq. In.	M _u in Ft.-Kips per Unit	SIMPLE SPAN IN FEET – CENTER TO CENTER OF END BEARINGS																			V _{AU(CW)} in Lbs. per Unit	M' _{CR} in Ft. Lbs. per Unit
				15	16	17	18	19	20	21	22	23	24	25	26	27	28	29	30	31	32	33		
824C-B58	4-1/2	0.576	50.75	352	327	305	284	255	230	208	184	164	146	130	116	103	92	82	73	65	57	50	10200	29154
824C-B50	2-1/2 & 2-7/16	0.504	45.66	345	321	298	266	239	212	187	166	147	130	115	102	91	81	71	63	55	48	42	10014	26885
824C-B43	4-7/16	0.432	40.24	345	311	276	245	215	188	166	146	129	113	100	88	78	68	60	52	45	39	33	10017	24494
824C-B38	2-7/16 & 2-3/8	0.376	35.79	327	282	244	213	186	163	144	127	112	99	88	77	67	58	51	44	37	31	26	9834	22550
824C-B32	4-3/8	0.320	31.13	279	239	206	179	156	136	119	104	91	80	70	61	53	46	40	34	29			9849	20529
824C-B29	2-1/2	0.288	28.37		214	184	159	138	120	104	91	79	69	60	52	45	38	32	27				9393	19340
824C-B28	2-3/8 & 2-5/16	0.276	27.31	239	204	175	151	131	114	99	86	74	65	56	48	41	35	29					9669	18887
824C-B23	4-5/16	0.232	23.35	197	168	143	123	105	90	78	66	57	48	41	34	28							9698	17197
824C-B22	2-7/16	0.216	21.88	182	154	131	112	96	82	70	59	50	42	35	29								9272	16570

*TABULATED LOADS ARE BASED ON $M_u = 1.4 M_b + 1.7 M_L$ AND WITH ALL LOAD SUPERIMPOSED ON THE STRUCTURAL SECTION CONSIDERED AS LIVE LOAD.**

PHYSICAL PROPERTIES OF STRUCTURAL SECTION AND SPECIFICATIONS



$A = 109.7 \text{ in.}^2$ $f'_s = 250.0 \text{ ksi}$ $V_{c1} \text{ min} = 4808 \text{ lbs.}$
 $f'_{c1} = 3500 \text{ psi}$ $b^1 = 6.25 \text{ in.}$ $V_A = 1697 \text{ lbs.}$
 $f'_c = 5000 \text{ psi}$ $I_s = 843.2 \text{ in.}^4$
 $f_{s1} = 175.0 \text{ ksi}$ $\phi_s = 0.85$

Grouted weight of structural unit is 57 lbs. per sq. ft. or 114 lbs. per lin. ft.
 Design is based on ACI 318-71 building code requirements for reinforced concrete.
 Span-depth ratio limitations are per the requirements of the PCI design handbook.
 Note – For longer spans, heavier loads or special conditions consult your local manufacturer.