



Safe Load Table

8" x 24" SECTION

See instructions on back side of sheet for using this table.

UNIFORMLY DISTRIBUTED SUPERIMPOSED* LOAD IN LBS. PER SQ. FT.

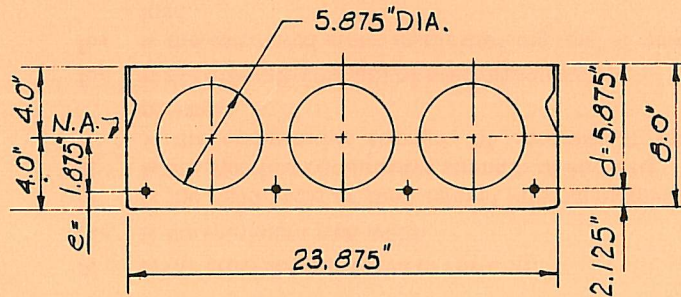
Standard Designation	Combination of 7-Wire Strand	Strand Area Sq. In.	Muc in Ft.-Kips per Unit	SIMPLE SPAN IN FEET – CENTER TO CENTER OF END BEARINGS (l)																			
				15	16	17	18	19	20	21	22	23	24	25	26	27	28	29	30	31	32	33	
824C-C58	4-1/2	0.576	53.41	363	337	314	294	276	251	227	206	188	168	150	135	121	108	97	87	78	70	62	
824C-C50	2-1/2 & 2-7/16	0.504	47.77	353	328	306	285	255	230	208	185	164	146	130	116	104	92	82	73	65	58	51	
824C-C43	4-7/16	0.432	41.83	351	326	291	257	226	199	176	156	139	124	110	98	87	77	68	59	52	45		
824C-C38	2-7/16 & 2-3/8	0.376	37.01	340	293	254	222	194	171	150	133	118	104	92	82	72	64	56	49	42			
824C-C32	4-3/8	0.320	32.01	288	247	214	185	162	141	124	109	95	84	73	64	56	49	43					
824C-C29	2-1/2	0.288	29.08		220	190	164	143	124	108	94	82	72	62	54	47	40						
824C-C28	2-3/8 & 2-5/16	0.276	27.97	245	210	181	156	135	117	102	89	77	67	58	50	43							
824C-C23	4-5/16	0.232	23.81	202	172	147	126	108	93	80	69	59	50	43									
824C-C22	2-7/16	0.216	22.27	186	158	134	115	98	84	72	61	52	44										

← l/h = 40

l/h = 50 →

* TABULATED LOADS ARE BASED ON $U = 1.4D + 1.7L$ AND WITH ALL LOAD SUPERIMPOSED ON THE STRUCTURAL SECTION CONSIDERED AS LIVE LOAD.**

PHYSICAL PROPERTIES OF STRUCTURAL SECTION AND SPECIFICATIONS



$A = 109.7 \text{ in.}^2$ $f_{si} = 175 \text{ ksi}$ $I_g = 843.2 \text{ in.}^4$
 $f'_{ci} = 3500 \text{ psi}$ $f_{pu} = 250 \text{ ksi}$
 $f'_c = 5000 \text{ psi}$ $bw = 6.25 \text{ in.}$

Grouted weight of structural unit is 57 lbs. per sq. ft. or 114 lbs. per lin. ft.
 Design is based on ACI 318-71 building code requirements for reinforced concrete.
 Recommended maximum l/h ratio is 40 for floor and 50 for roof as per PCI Design Handbook (1971).

Note — For longer spans, heavier loads or special conditions consult your local manufacturer.