



Safe Load Table

See instructions on back side of sheet for using this table.

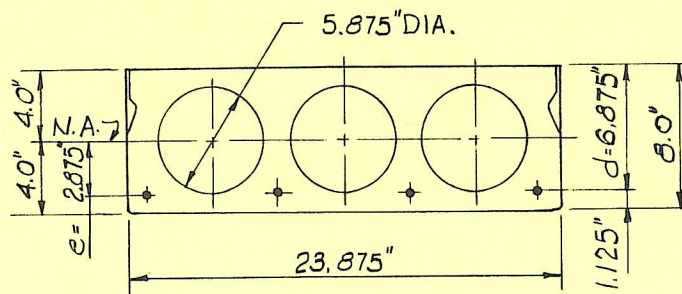
8" x 24" SECTION

UNIFORMLY DISTRIBUTED SUPERIMPOSED* LOAD IN LBS. PER SQ. FT.

Standard Designation	Combination of 7-Wire Strand	Strand Area Sq. In.	Muc in Ft.-Kips per Unit	SIMPLE SPAN IN FEET—CENTER TO CENTER OF END BEARINGS (l)																		
				15	16	17	18	19	20	21	22	23	24	25	26	27	28	29	30	31	32	33
824B-CB46	4-7/16	0.460	56.41	392	364	340	319	299	272	246	224	204	183	165	148	133	120	108	97	87	78	70
824B-CB40	2-7/16 & 2-3/8	0.400	49.86	381	354	330	307	275	246	219	195	175	157	141	126	114	102	91	81	73	65	57
824B-CB34	4-3/8	0.340	43.07	380	349	304	266	234	206	183	162	145	129	115	103	92	82	73	66	58	51	44
824B-CB31	2-1/2	0.306	39.12	326	292	264	237	208	183	162	143	127	113	100	89	79	70	62	55	49	43	
824B-CB23	2-7/16	0.230	30.01	261	229	197	171	149	129	113	99	86	76	66	57	50	43	← l/h = 40				l/h = 50 →

* TABULATED LOADS ARE BASED ON U = 1.4D + 1.7L AND WITH ALL LOAD SUPERIMPOSED ON THE STRUCTURAL SECTION CONSIDERED AS LIVE LOAD.**

PHYSICAL PROPERTIES OF STRUCTURAL SECTION AND SPECIFICATIONS



$A = 109.7 \text{ in.}^2$ $f_{si} = 189 \text{ ksi}$ $I_g = 843.2 \text{ in.}^4$
 $f'_{ci} = 3500 \text{ psi}$ $f_{pu} = 270 \text{ ksi}$
 $f'_c = 5000 \text{ psi}$ $b_w = 6.25 \text{ in.}$

Grouted weight of structural unit is 57 lbs. per sq. ft. or 114 lbs. per lin. ft.
 Design is based on ACI 318-71 building code requirements for reinforced concrete.
 Recommended maximum l/h ratio is 40 for floor and 50 for roof as per PCI Design Handbook (1971).

- Note — 1. For longer spans, heavier loads or special conditions consult your local manufacturer.
 2. Tabulated loads in shaded areas are controlled by bond.