



Safe Load Table

See instructions on back side of sheet for using this table.

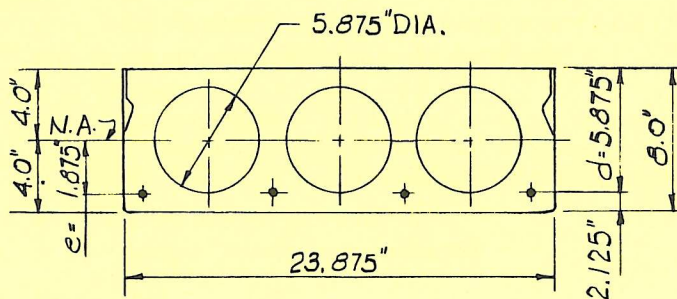
8" x 24" SECTION

UNIFORMLY DISTRIBUTED SUPERIMPOSED* LOAD IN LBS. PER SQ. FT.

Standard Designation	Combination of 7-Wire Strand	Strand Area Sq. In.	Muc in Ft.-Kips per Unit	SIMPLE SPAN IN FEET—CENTER TO CENTER OF END BEARINGS (l)																						
				15	16	17	18	19	20	21	22	23	24	25	26	27	28	29	30	31	32	33				
824C-CB54	2-1/2 & 2-7/16	0.536	53.63	363	337	315	295	277	252	228	207	188	169	151	135	121	109	98	88	78	70	63				
824C-CB46	4-7/16	0.460	47.19	362	336	313	282	253	228	205	182	162	144	128	114	102	91	81	72	64	56	50				
824C-CB40	2-7/16 & 2-3/8	0.400	41.83	351	326	291	257	226	199	176	156	139	124	110	98	87	77	68	59	52	45					
824C-CB34	4-3/8	0.340	36.23	332	286	248	216	189	166	146	129	114	101	89	79	70	62	54	47							
824C-CB31	2-1/2	0.306	32.96	267	239	215	192	168	147	129	113	100	88	77	68	59	52	45								
824C-CB23	2-7/16	0.230	25.37	213	186	160	137	118	102	88	76	66	57	48	41		← l/h = 40				l/h = 50 →					

* TABULATED LOADS ARE BASED ON $U = 1.4D + 1.7L$ AND WITH ALL LOAD SUPERIMPOSED ON THE STRUCTURAL SECTION CONSIDERED AS LIVE LOAD.**

PHYSICAL PROPERTIES OF STRUCTURAL SECTION AND SPECIFICATIONS



$A = 109.7 \text{ in.}^2$ $f_{si} = 189 \text{ ksi}$ $I_g = 843.2 \text{ in.}^4$
 $f'_{ci} = 3500 \text{ psi}$ $f_{pu} = 270 \text{ ksi}$
 $f'_c = 5000 \text{ psi}$ $b_w = 6.25 \text{ in.}$

Grouted weight of structural unit is 57 lbs. per sq. ft. or 114 lbs. per lin. ft.
 Design is based on ACI 318-71 building code requirements for reinforced concrete.
 Recommended maximum l/h ratio is 40 for floor and 50 for roof as per PCI Design Handbook (1971).

- Note — 1. For longer spans, heavier loads or special conditions consult your local manufacturer.
 2. Tabulated loads in shaded areas are controlled by bond.